




@susfans_eu 

EU grant no. 633692 under H2020-SFS-19A (Societal challenge 2)

SUSFANS

Metrics, models and foresight for sustainable food and nutrition security in Europe

Jiri Ruprich (SZÚ): Welcome and workshop introduction



Why SUSFANS project?

Carbon emissions from food

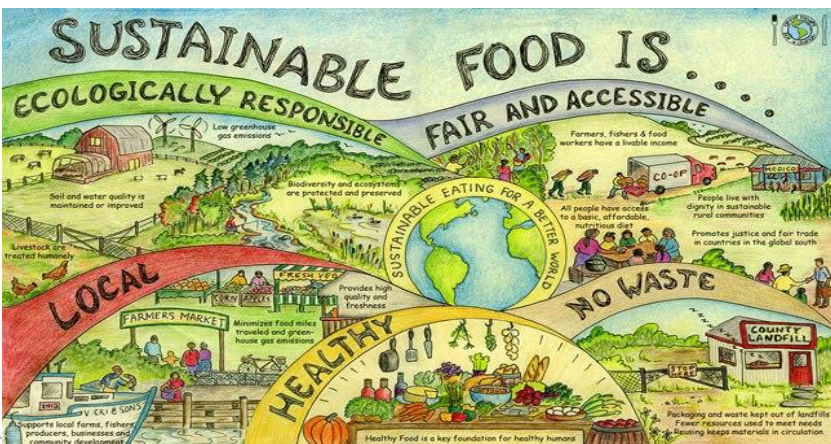
Equivalent kilometres driven per kilogram of food*



*Assuming a Honda Civic sedan

CBC NEWS

Source: Environmental Working Group



- Cooperation with partners** towards EU food systems that contribute to
 - health,
 - environment,
 - equity and viable enterprise...
- High-quality research** on
 - metrics,
 - models and foresight
 to support evidence-based **policies and innovation strategies** for a sustainable and food and nutrition secure EU.



Who participate at this project?



EU grant no. 633692 under H2020-SFS-19A (Societal challenge 2)



Participants at this Prague workshop



Workshop agenda – 1 - morning

PROGRAM	
<i>Part I : Stakeholder workshop</i>	
Time	Subject
09:30 - 10:00	Walk-in with coffee/tea
10:00 - 10:10	Welcome & objectives <i>by Jiri Ruprich (SZU)</i>
10:10 - 10:40	Introduction to SUSFANS <i>by Thom <u>Achterbosch</u> (Project Coordinator)</i>
10:40 - 11:00	Reflections on SUSFANS from the local perspective <i>by Marcela <u>Dofkova</u> (SZU)</i>
11:00 - 11:20	Modelling sustainable food and nutrition security <i>by Petr <u>Havlik</u> (IIASA)</i>
11:20 - 11:35	Introduction to the SUSFANS toolbox <i>by Thom <u>Achterbosch</u></i>
11:35 - 11:45	Introduction to group discussions
Coffee break	

Workshop agenda – 2 - morning

Coffee break	
12:00 - 12:20	<p>SUSFANS results: group discussions</p> <p><i>Group discussions on SUSFANS results: Assessing sustainable food and nutrition security (SFNS) Monitoring developments, risks and challenges of SFNS</i></p>
12:20 - 12:35	<p>Discussion on priorities of health and sustainability goals: group discussions</p> <p><i>Group discussions on health and sustainability priorities</i></p>
12:35 - 12:50	<p>Plenary discussion</p> <p><i>Conclusions from group discussions</i></p>
12:50 - 13:00	<p>Wrap up and closure</p> <p><i>by Thom <u>Achterbosch</u></i></p>
Lunch	

Workshop agenda – 3 - afternoon

PROGRAM	
<i>Part II : Key stakeholder workshop</i>	
13:50 - 14:00	Short introduction <i>by Jiri Ruprich</i>
14:00 - 14:10	Summary of morning session <i>by Thom Achterbosch</i>
14:10 - 14:35	Round I : Assessment <i>by Thom Achterbosch & Petr Havlik</i>
14:35 - 15:00	Round II : Modelling <i>by Thom Achterbosch & Petr Havlik</i>
Coffee break	
15:20 - 15:45	Round III : Foresight <i>by Thom Achterbosch & Petr Havlik</i>
15:45 - 15:55	Summarizing and main conclusions <i>by Thom Achterbosch</i>
15:55 - 16:15	Further collaboration and follow-up projects <i>by Karin Zimmermann (Wageningen Economic Research) & Thom Achterbosch</i>
16:15 - 16:30	Closure <i>by Jiri Ruprich</i>

Group Discussions – 2 mixed groups

The moderator facilitates a discussion, allowing participants to express their personal opinion and give feedback



- What is ready to be applied in your work?
- What would also be relevant, and what is not?
- What is needed in future to apply the relevant parts, how, where, and who could provide this?
- What would be the impact of applying it?
- What would the application of user toolbox mean for you, for your community and for the world?
- How might it affect your daily life?
- To what extent would that contribute to sustainability and health?

Read and choose

- Invite you all to read the demo cards individually
- Pick out the (3-5) most relevant for YOU to be discussed
- Show your choice by putting a post-it on the poster

Then we start to discuss the chosen cards



Now we start with SUSFANS morning lectures

