

Halofilní řasy a sinice

Petr Marvan, Markéta Fránková, Jiří Heteša

System halobií

Druhy	koncentrace NaCl (mg/l)
• Polyhalobní	přes 30 000
• Euryhalinní	200 - 30 000
• a-mesoalobní	10 000 - 30 000
• b-mesohalobní	200 - 10 000
• halofilní	do 200
• indiferentní	různá
• halofobní	do 10 ?

Kde se můžeme se slanomilnými řasami a sinicemi v ČR setkat

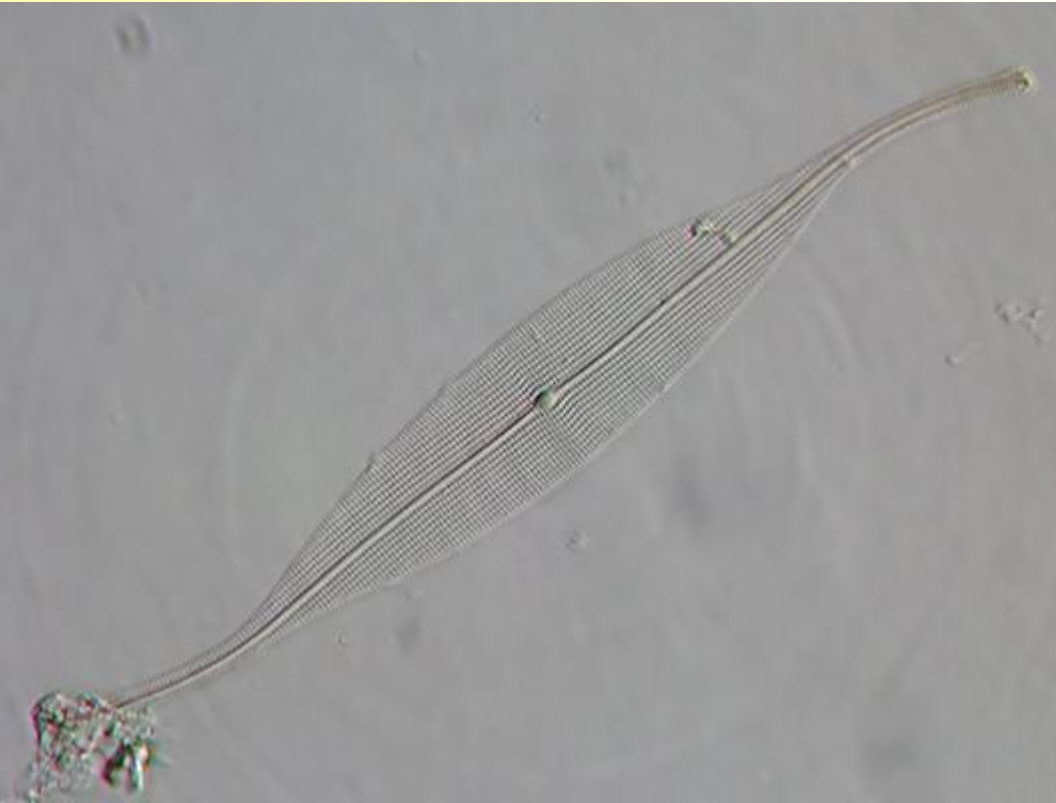
Původní

- a. Minerální (zejm. termální) prameny a toky pod jejich zaústěním: např. Karlovy Vary, lokalita "Soos" u Františkových Lázní; na Slovensku např. Piešťany, Sivá Brada, Liptovký Sv. Ján
- b. Jižní Morava (sem zasahuje oblast výskytu halofytů z Panonské nížiny)

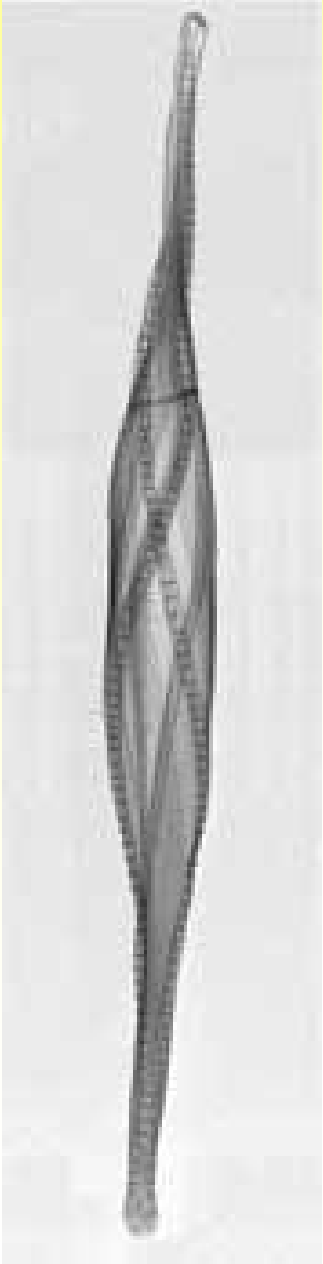
Druhotné

- c. Oblasti těžby: např. Mostecko, Ostravsko, Oslavany (Neslovický potok)
- d. Elektrárny (chladicí věže; mj. i pod JE Dukovany)
- e. Ale i jinde (invaze *Enteromorpha* v 80. letech; invaze *Actinocyclus normanii* v 90. letech)

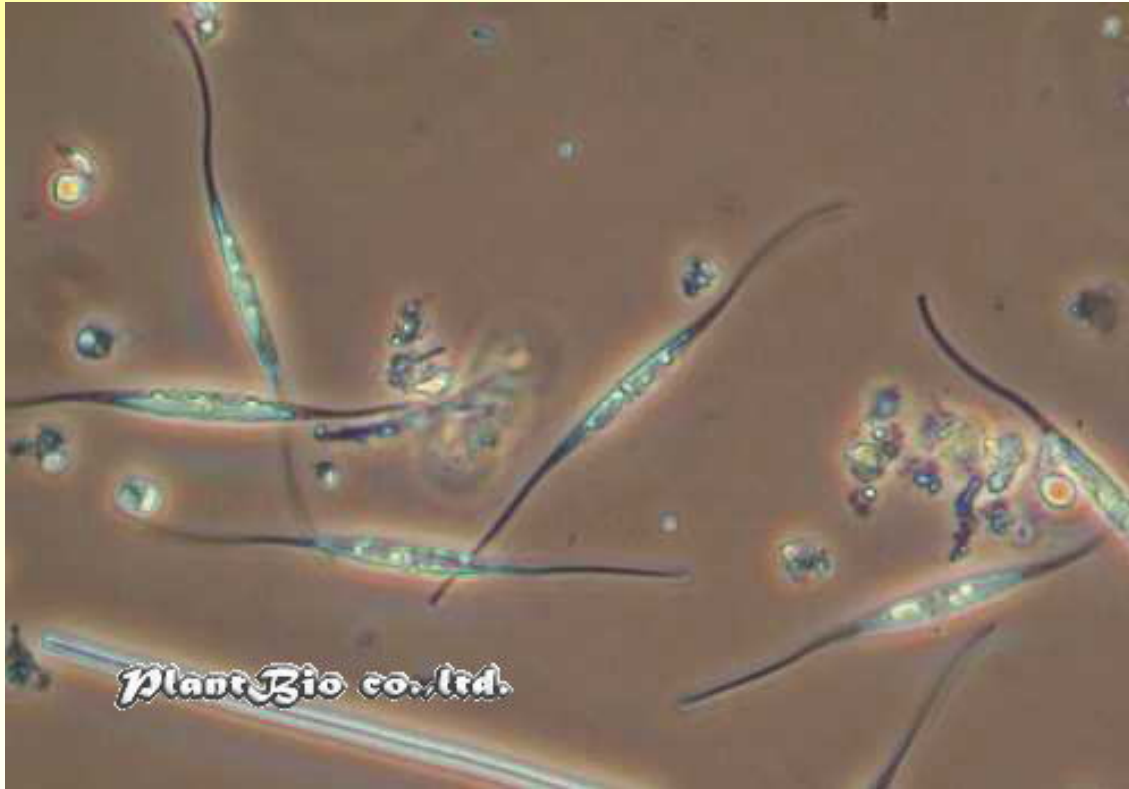
Gyrosigma fasciola



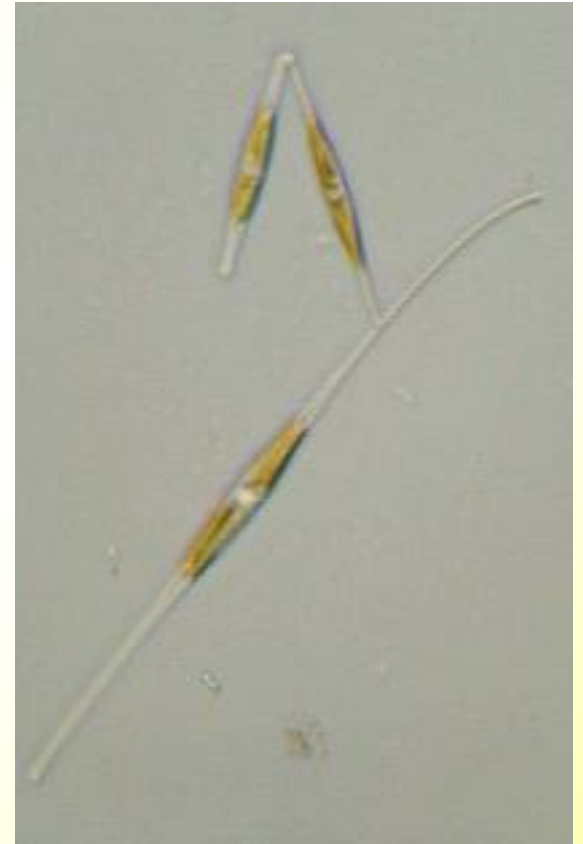
Cylindrotheca gracilis



Nitzschia reversa

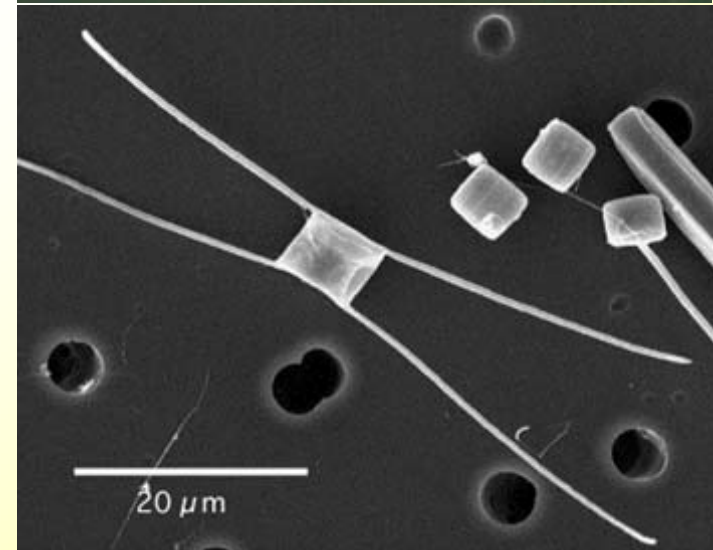
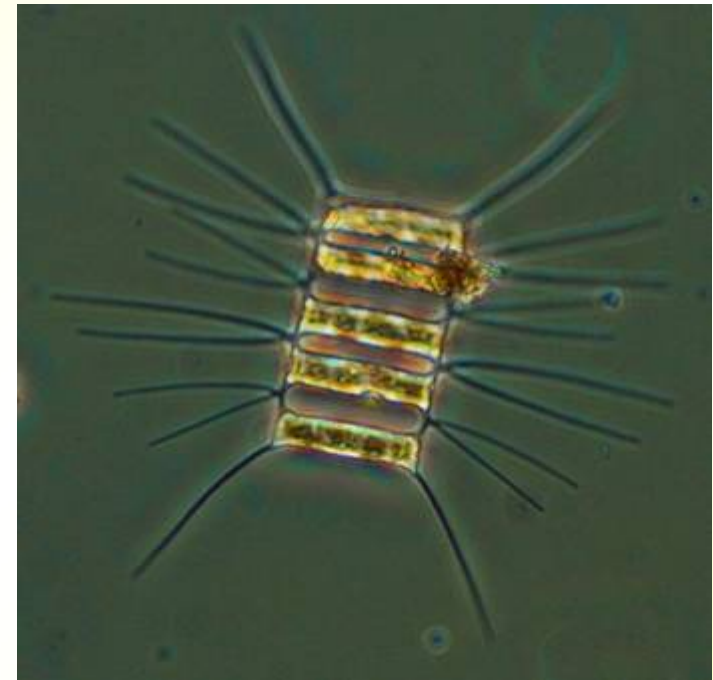


<http://blog-imgs-32.fc2.com/b/i/o/biodic07/20090128151929.jpg>



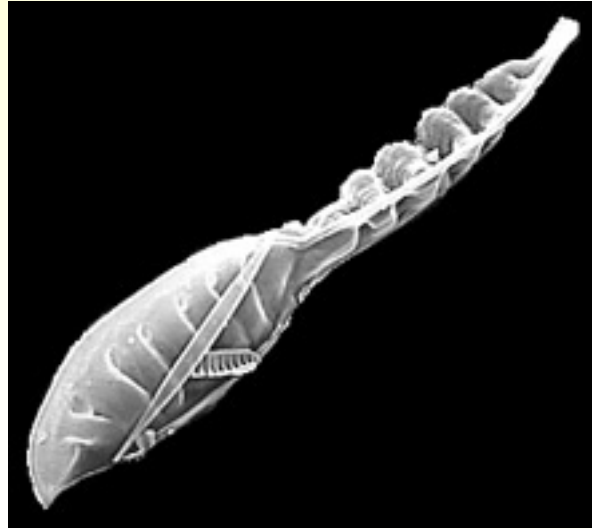
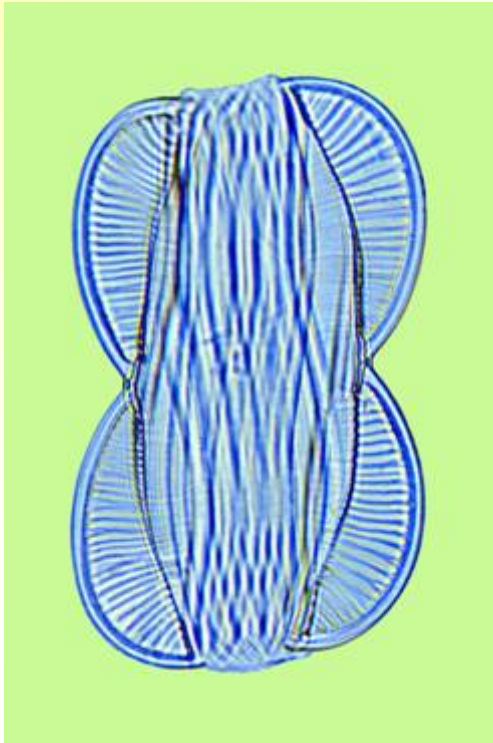
<http://forum.mikroskopia.com/uploads/post-7-1096289684.jpg>

Chaetoceros



Entomoneis

http://www.microbeworld.org/images/meetmicros/protista/p_diatom2.jpg



<http://www.diatomloir.eu/Site%20Diatom/intertidun/Entomoneis.jpg>

http://www.keweenawalgae.mtu.edu/ALGAL_IMAGES/bacillariophyceans/Entomoneis_jason_dbtow11b_402.jpg

Pleurosigma



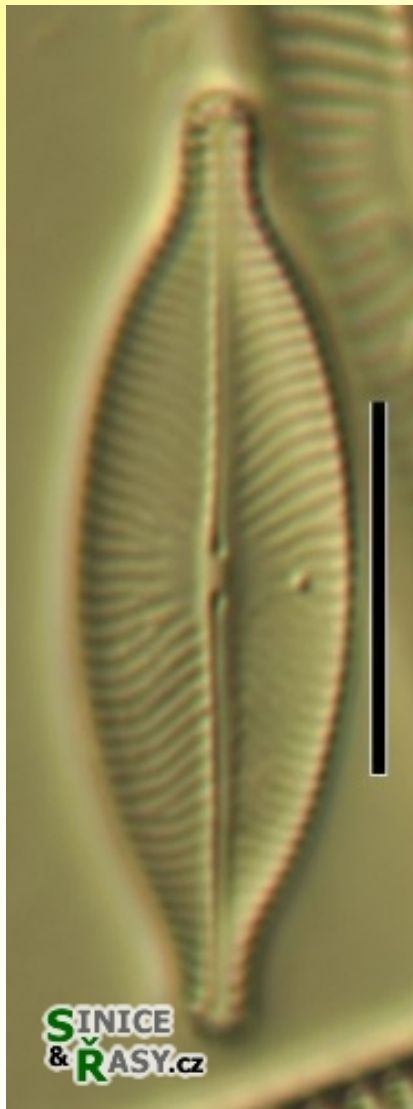
<http://www.gpmatthews.nildram.co.uk/diatoms/pleurosigma002.jpg>

Navicula peregrina

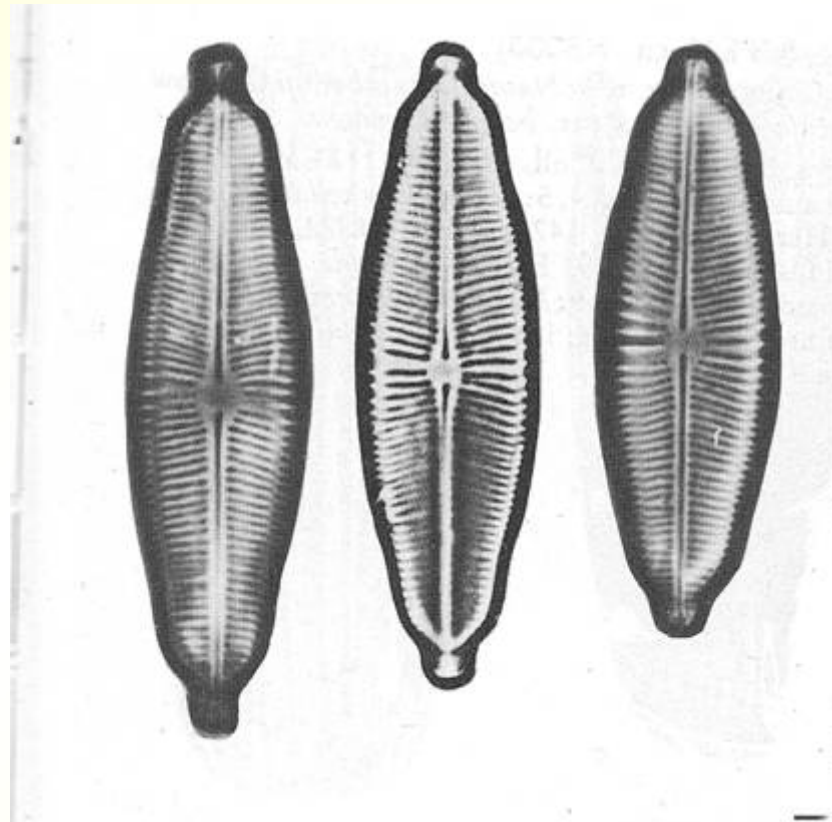


http://content7.eol.org/content/2008/12/10/22/11169_large.jpg

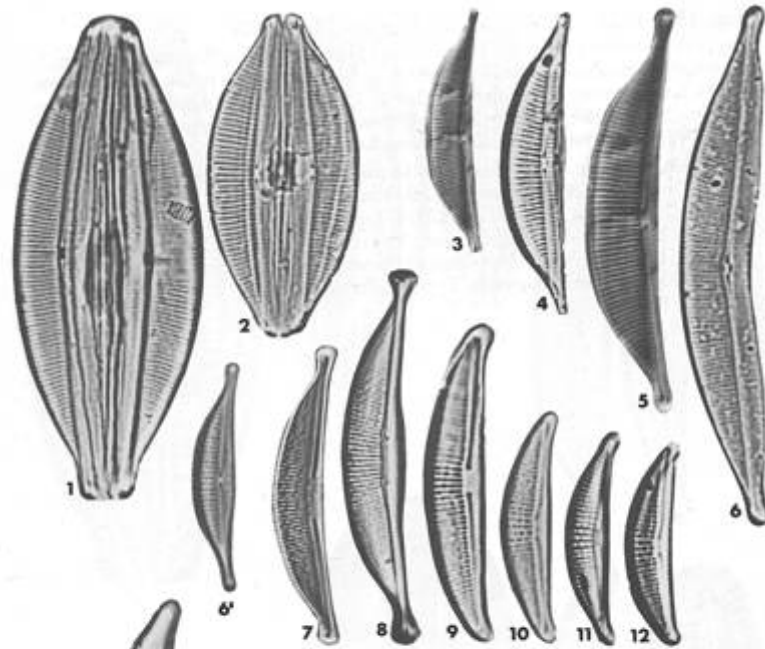
Navicula salinarum



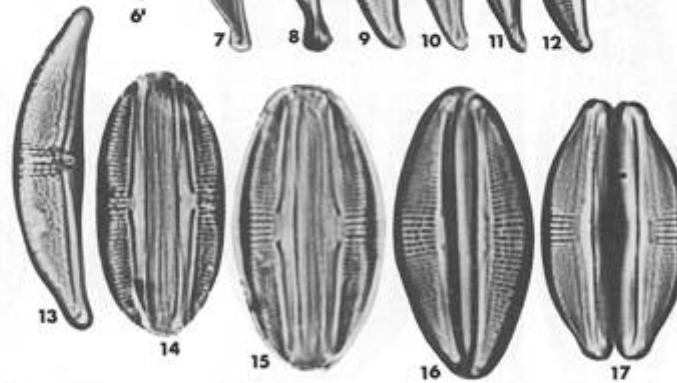
Navicula integra



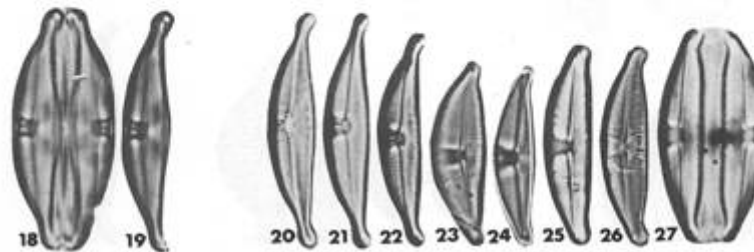
Amphora coffeaeformis



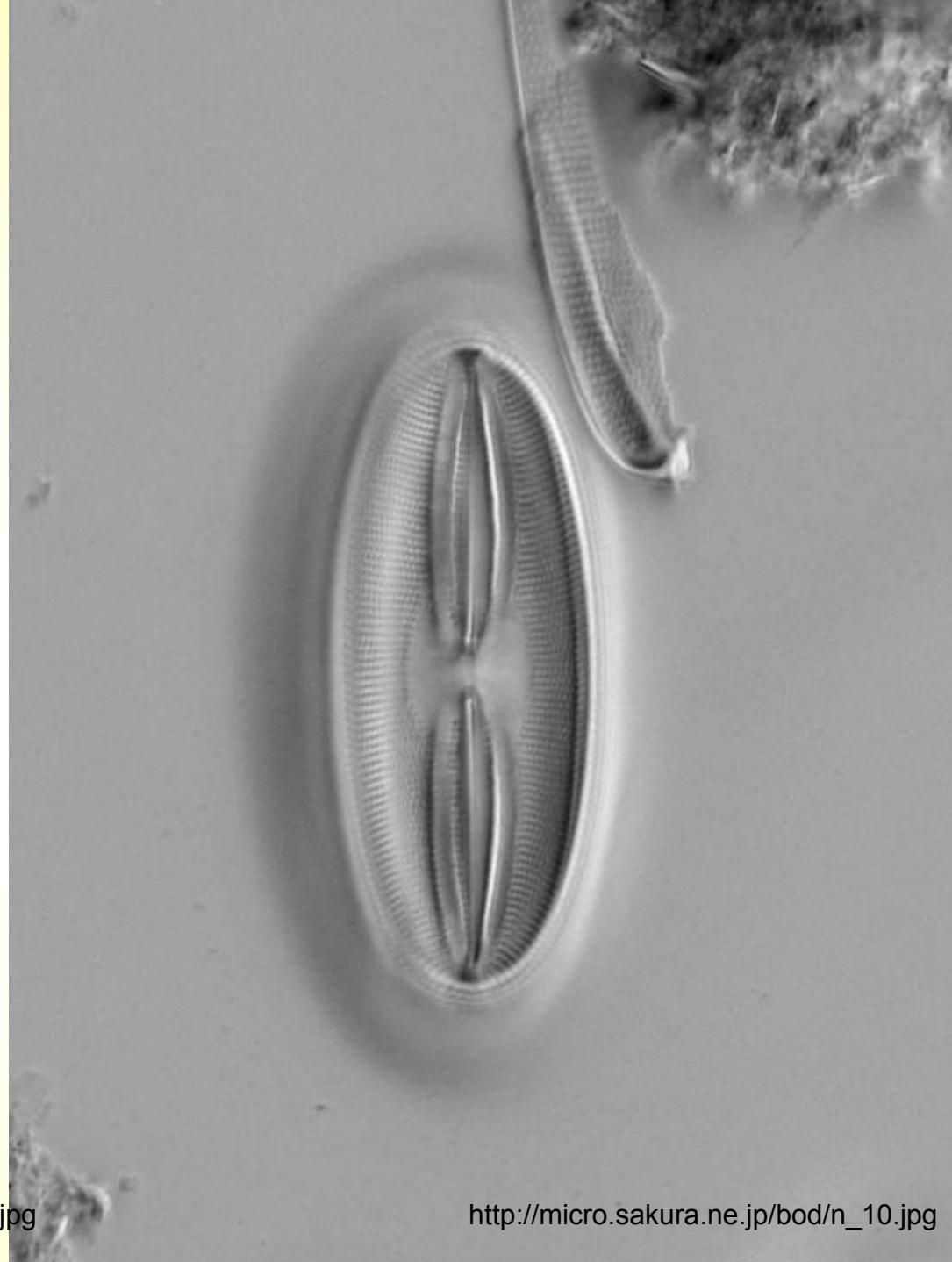
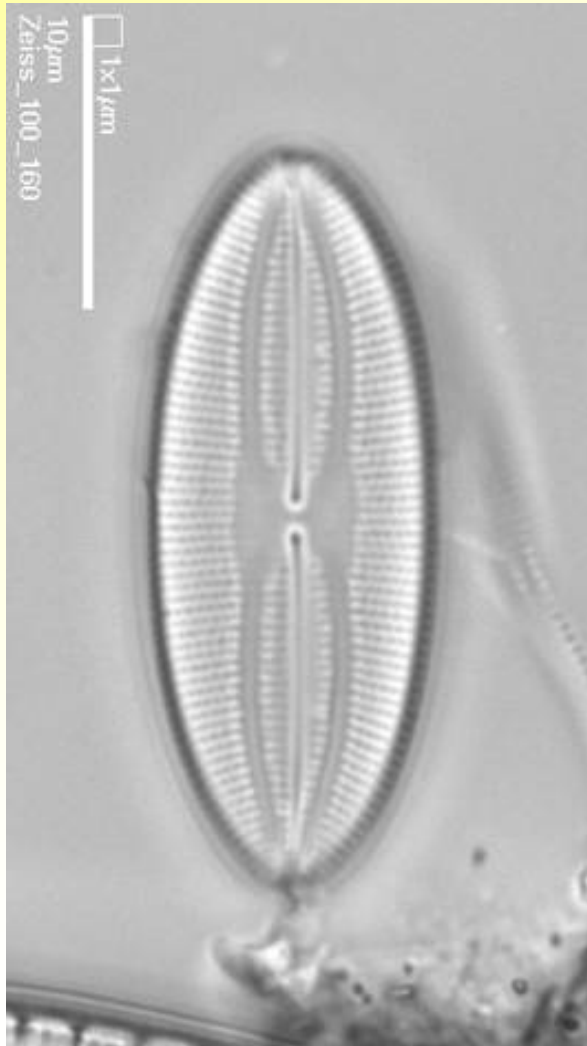
Amphora veneta



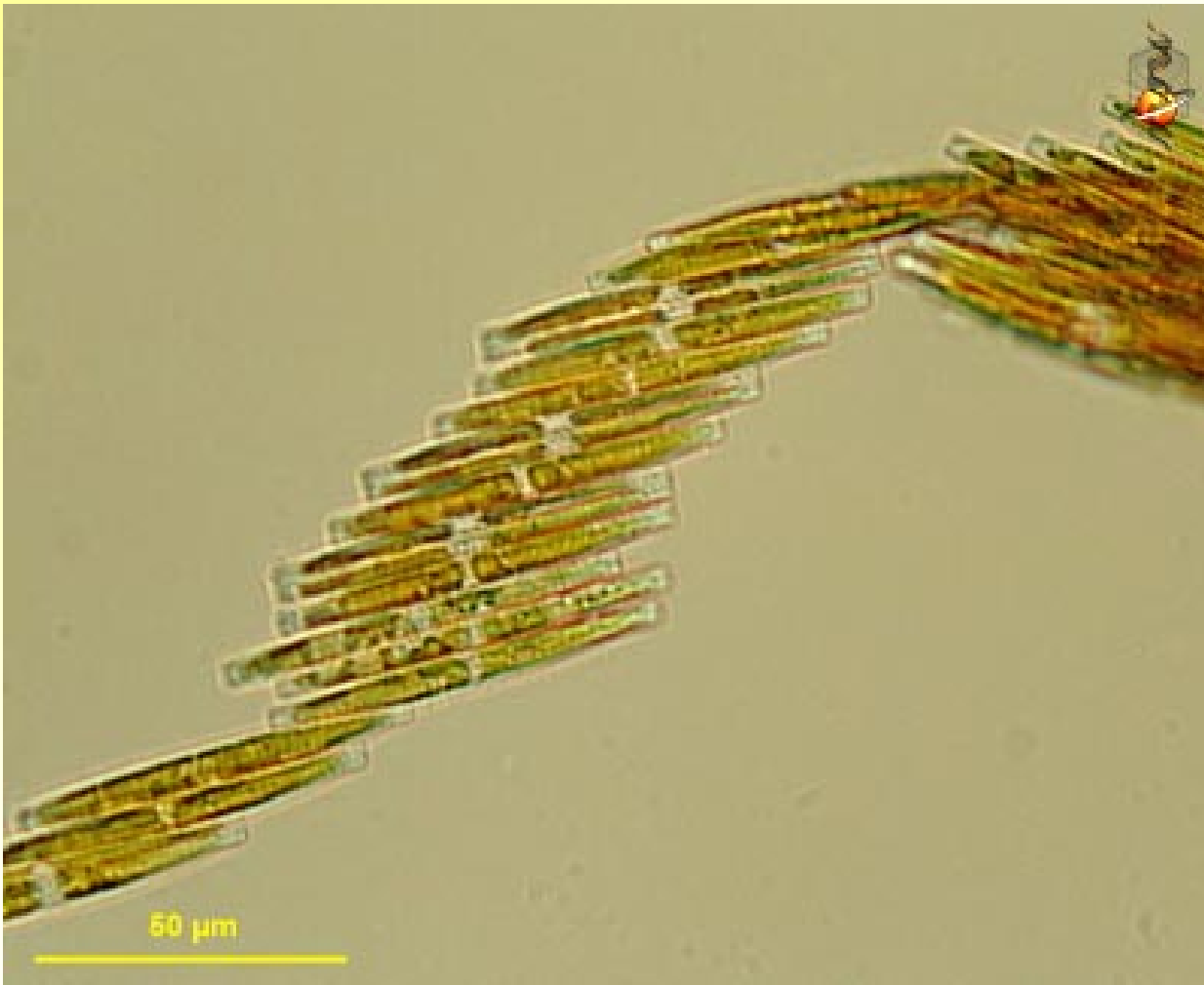
Amphora montana



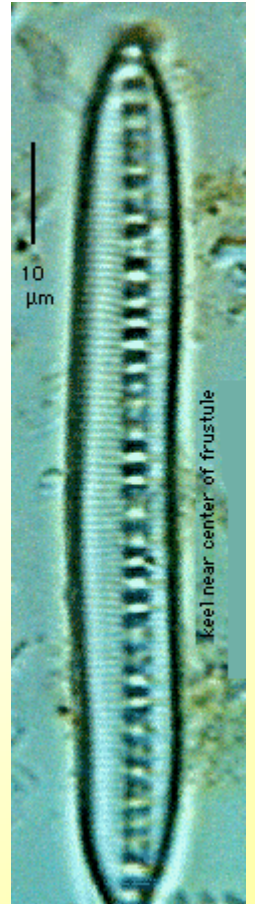
Fallacia pygmaea



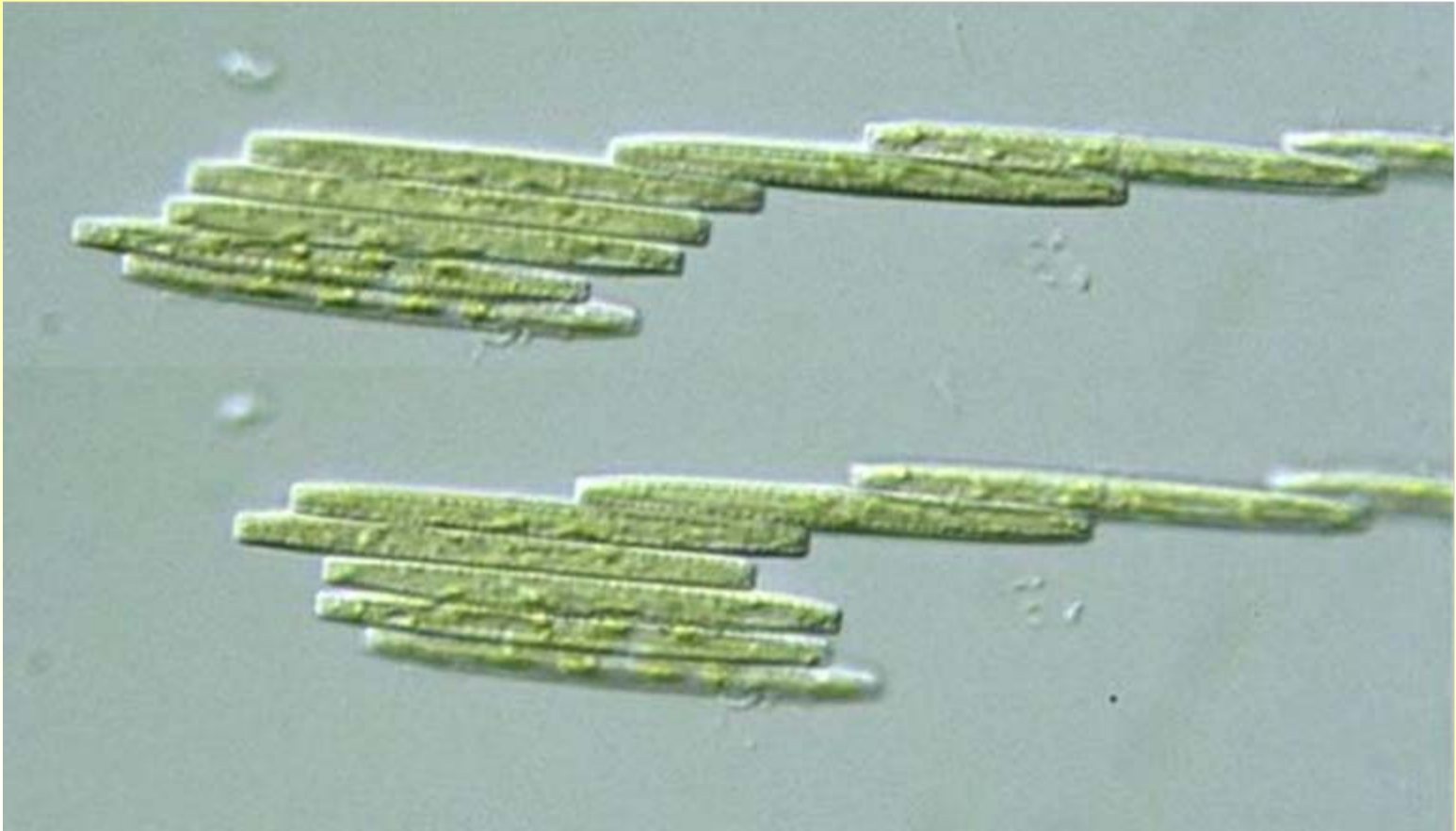
Bacillaria paxillifera



http://starcentral.mbl.edu/msr/rawdata/viewable/bacillaria2_bgw.jpg

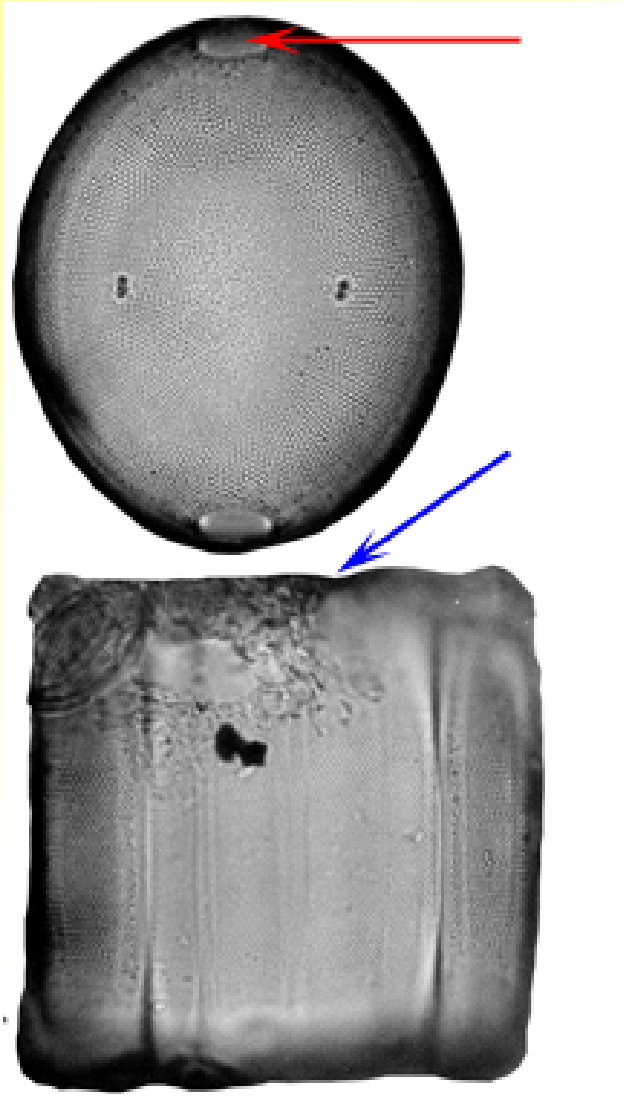


http://www.bgsu.edu/departments/biology/facilities/algae/P_and_AG_ESF/BacPara.GIF

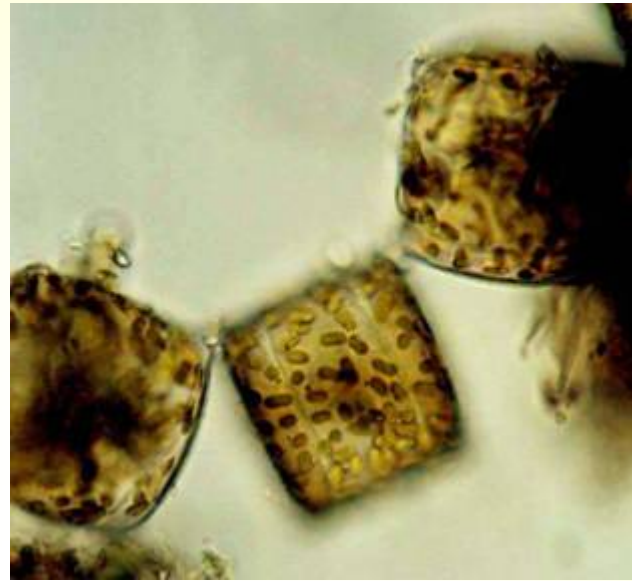


<http://protist.i.hosei.ac.jp/taxonomy/Heterokontophyta/Bacillariophyceae/Genus/Bacillaria/Bacillaria.jpg>

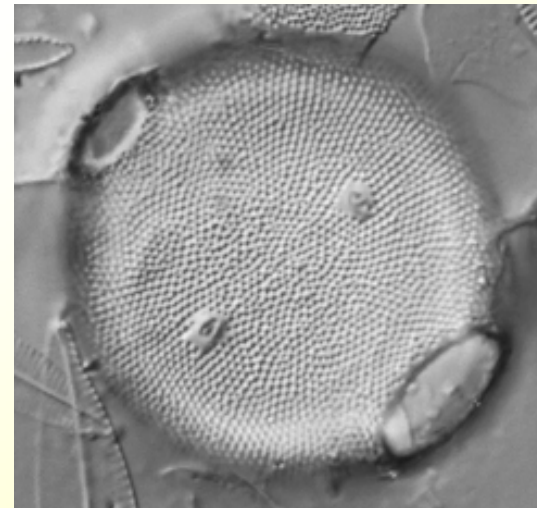
Pleurosira



<http://keisou.hp.infoseek.co.jp/chuusin/Pleurosi/pleu.gif>

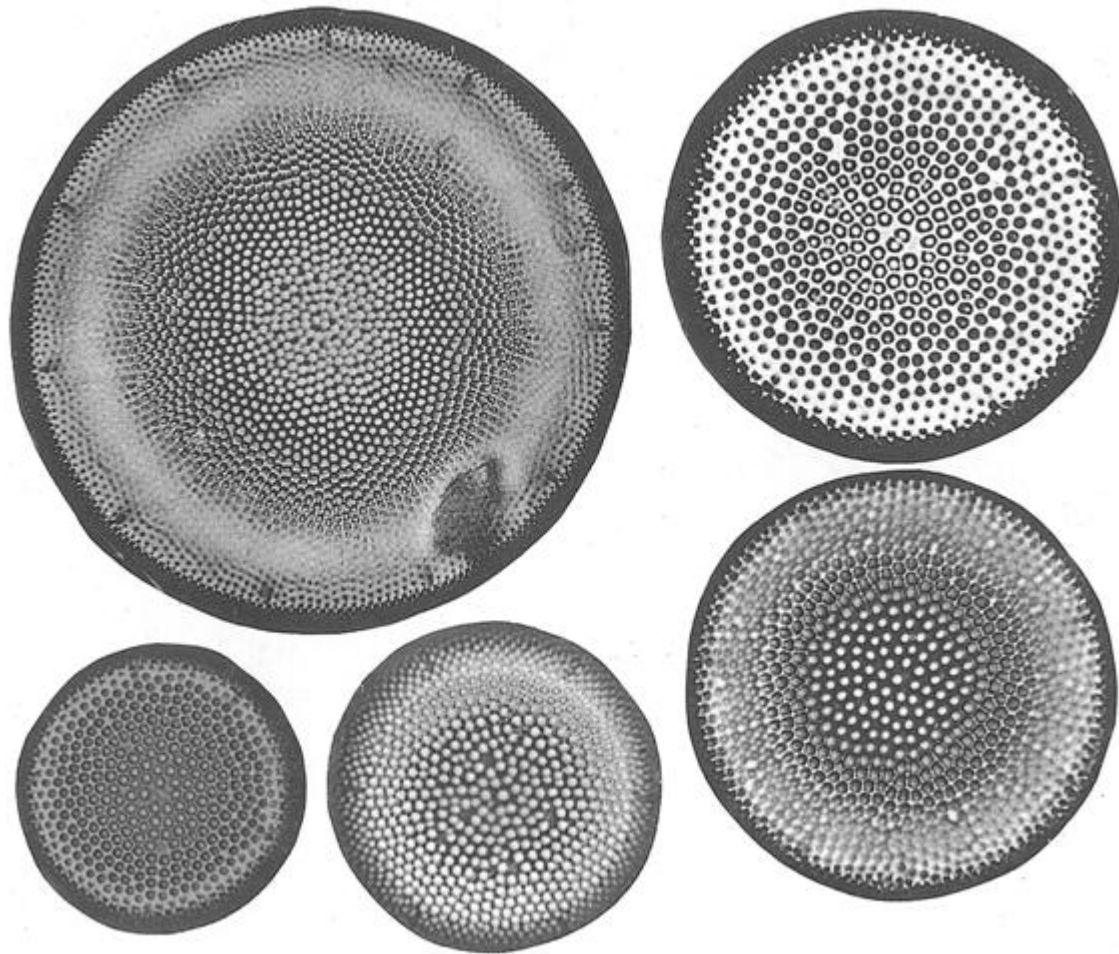


<http://keisou.hp.infoseek.co.jp/chuusin/Pleurosi/ples01.jpg>



<http://arts.monash.edu.au/ges/research/cpp/pleu1.jpg>

Actinocyclus normanii



Enteromorpha intestinalis



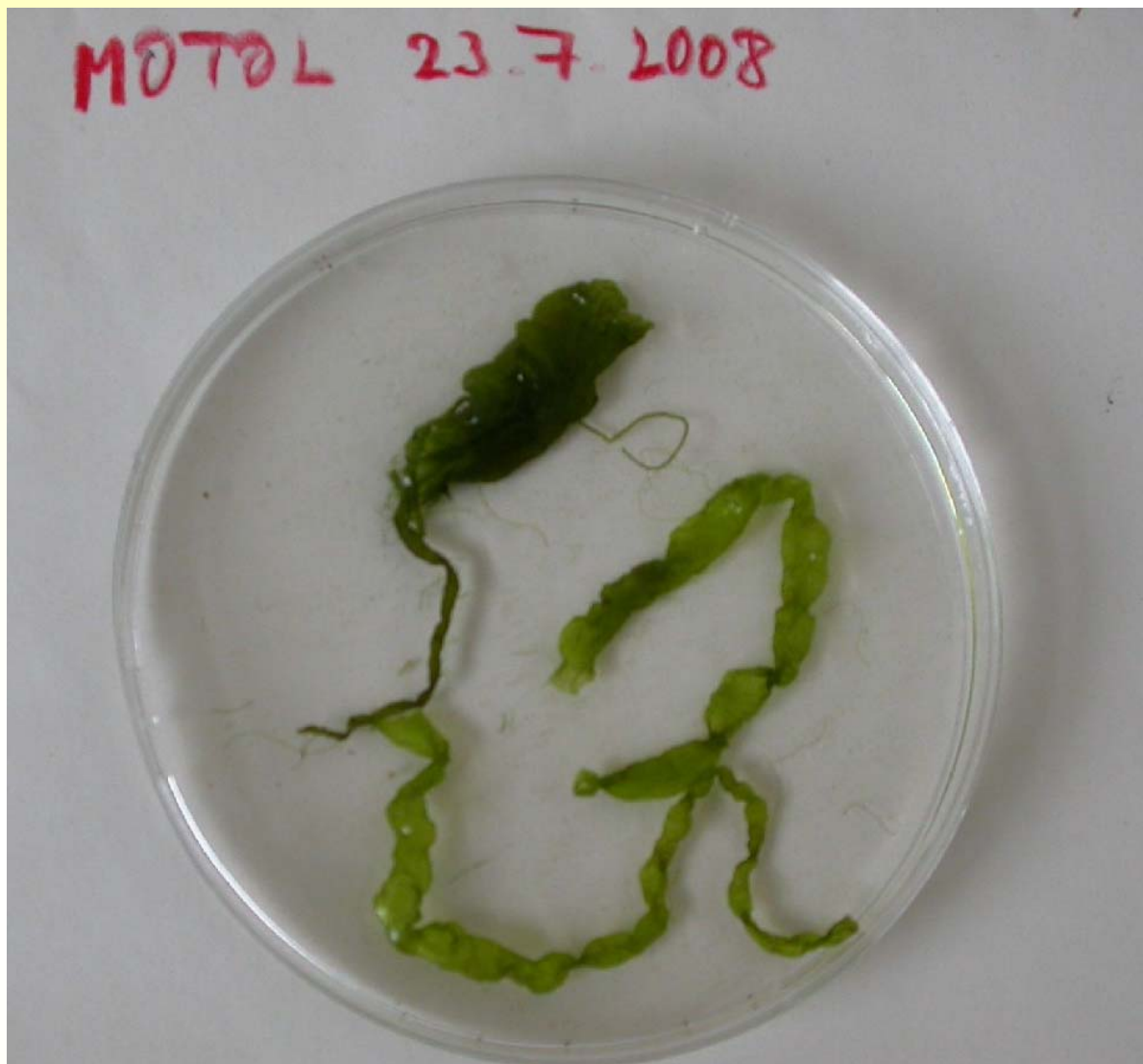
www.horta.uac.pt



All after Entwisle et al. (1997)

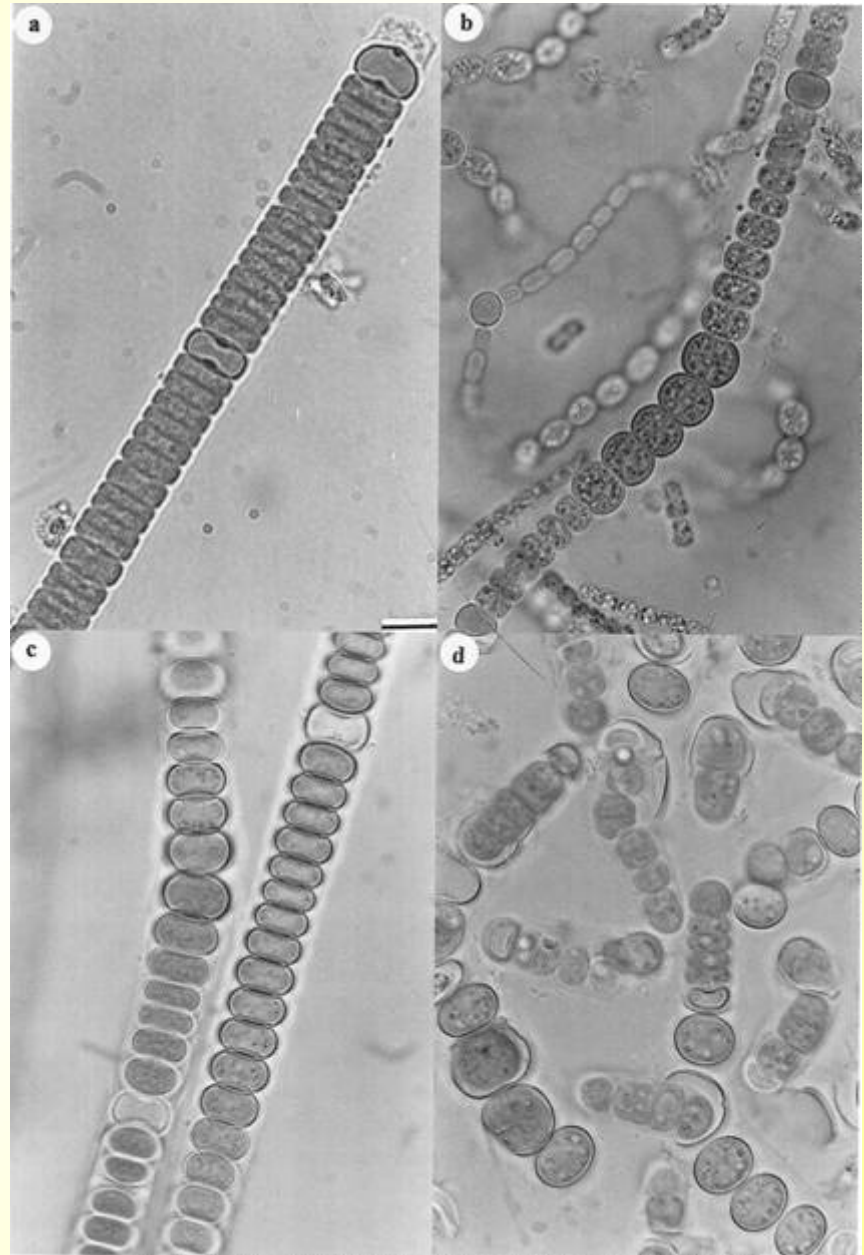
http://www.rbgsyd.nsw.gov.au/__data/assets/image/0003/47946/enteromorpha2.gif

Enteromorpha sp. (foto P.Pumann)



Nodularia moravica

Hindák F., Šmarda J., Komárek J.
2003



Děkuju za pozornost